

INSTRUCTION SHEET

Model W1705

8" Spiral Cutterhead Jointer

INTRODUCTION

The Model W1705 is the same jointer as the Model W1684 with the upgrade of the spiral cutterhead.

The spiral cutterhead consists of 40 indexable carbide inserts. Each insert has four cutting edges, which can be easily rotated if the current cutting edge becomes dull or damaged.

In addition, a reference dot is in one corner of each insert face to indicate when that insert has been rotated. After all four edges have been used, the dot will be back to its original position and replacement of the insert will then be necessary. Note—*To avoid confusion about which edges are sharp, always rotate inserts clockwise. The inserts are not resharpenable.*

INVENTORY

For the Model W1705, use the inventory list from the Model W1684, but exchange the standard cutterhead parts for the parts below:

- Torx Screw Driver T-Handle 6mm.....1
- Flat-Head Torx Screws.....10
- Torx Bits T205
- Carbide Inserts5

REPLACING or ROTATING INSERTS

To replace or rotate the inserts, do these steps:

1. UNPLUG THE JOINTER.
2. Clean out the heads of the insert Torx screws that you wish to replace or rotate.
3. Remove the Torx screw, replace or rotate the insert, lubricate the threads of the Torx screw with a light machine oil, and tighten the screw to 50 inch pounds of torque.



Figure 1. Spiral cutterhead.

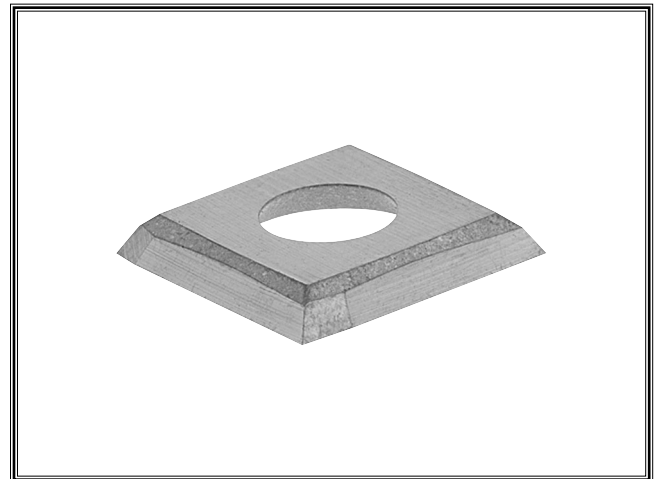


Figure 2. Indexable carbide insert.

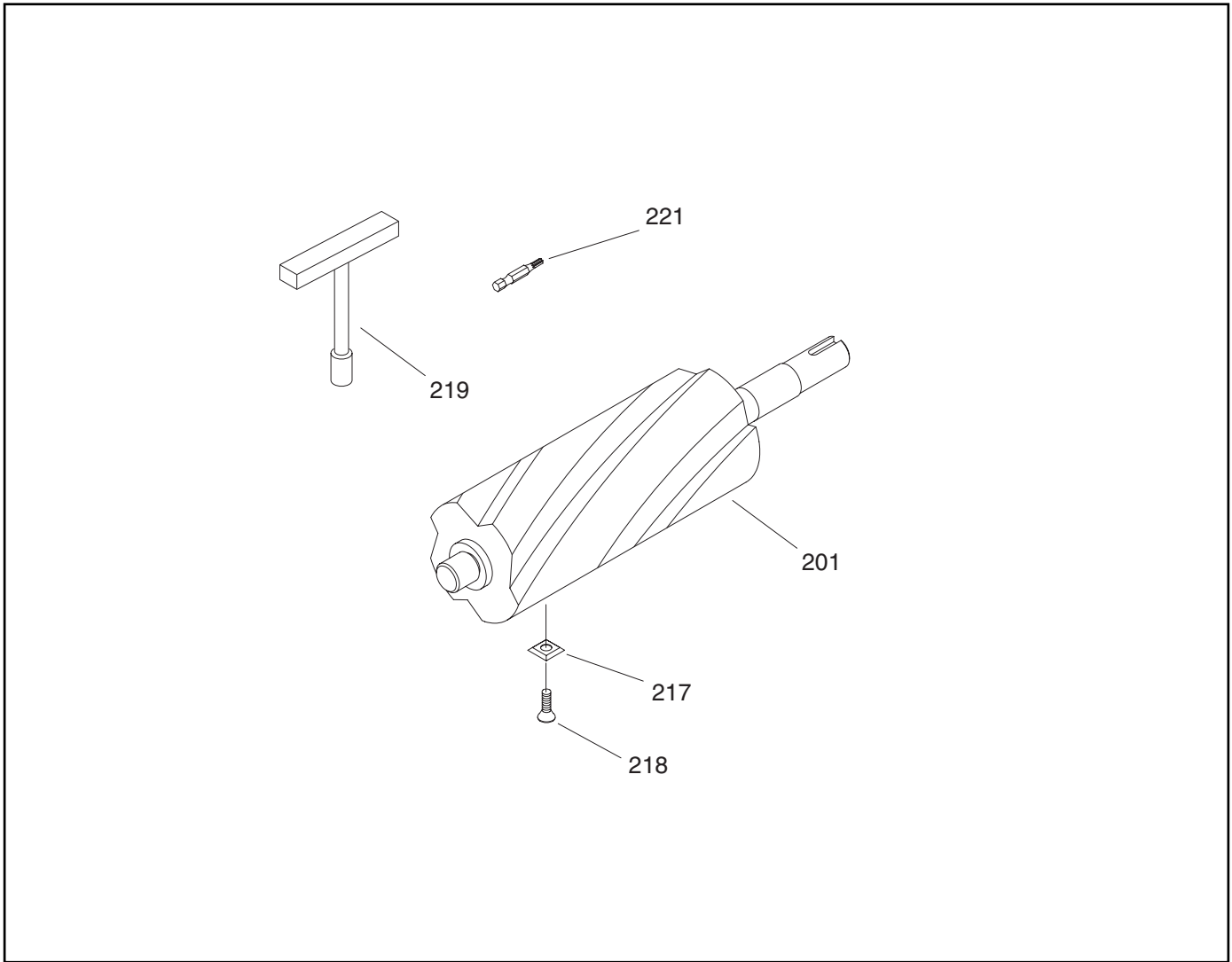
NOTICE

Make sure there is no wood dust or debris under insert when replacing it.

NOTICE

Over-tightening Torx screws may strip the cutterhead threads!

W1705 Replacement Parts



REF	PART #	DESCRIPTION
201	X1705201	SPIRAL CUTTERHEAD
217	X1705217	INDEXABLE CARBIDE INSERT
218	XPFH15M	FLAT HD TRX T20 M6-1 X 16
219	X1705219	TORX T-HANDLE DRIVER 6MM
221	X1714115	TORX BIT T20

NOTICE

All parts for the Model W1705, except those shown above, are the same as the Model W1684. Therefore, please use the included Model W1684 Manual when ordering new parts for your machine, unless those parts are shown above.

COPYRIGHT © BY WOODSTOCK INTERNATIONAL, INC.

WARNING: NO PORTION OF THIS DOCUMENT MAY BE REPRODUCED IN ANY SHAPE OR FORM WITHOUT THE WRITTEN APPROVAL OF WOODSTOCK INTERNATIONAL, INC.

OCTOBER 2003, PRINTED IN TAIWAN.